

# INSTANT BODY TEMPERATURE MEASURING CERTIFIED SYSTEMS

**MEASUREMENT ACCURACY  $\pm 0.3^{\circ}\text{C}$**

Thanks to these systems, it is possible to set up effective and timely temperature measuring stations that can be placed in strategic areas of multiple scenarios characterized by large flow of people. The instant measurement of 30 people simultaneously, from safe distance, makes it the ideal solution to identify the profiles at risk and drive them away from the crowd safeguarding the public health.

## APPLICATIONS



**CROWDED PLACES**



**HIGH RISK PLACES**



**SECURITY CHECKS**



**TEMPORARY CONTROL**



**HOSPITALS**



**MARKETS**



**RAILWAYS**



**AIRPORTS**



**STATIONS**



**ENTERPRISES**



**SCHOOLS**



**BUILDINGS**

## KEY ELEMENTS

### JQ-D70Z

Better known as “Blackbody”, it is a certified device placed in the field of view of the camera that provides a steady and precise temperature reference, which the camera uses to auto-calibrate increasing its accuracy.



### TPC-BF3221-TB7F8

Hybrid camera with temperature measurement that provides standard and thermal images of the scene at the same time. An AI algorithm recognizes human figures and measures the temperature of the faces, excluding any other heat source that could cause false alarms, from the optimum distance of 3 meters.



## OPTIONAL PRODUCTS

### CENTER330

Compact Server & workstation Win 10 Pro x64.



### NVR5X-I

4 channels video recording and event generation if someone has the face covered, for instance, by a mask.



### IVSS7X

8 channels video recording and event generation if someone has the face covered, for instance, by a mask.



## ACCESSORIES

### VTC-990

Tripod for camera/blackbody



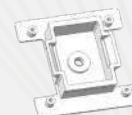
### SWP1220

12 VDC/2A power adapter for camera



### RAW021-00

Tripod adapter for camera/blackbody



## BASIC MEASURING SYSTEM

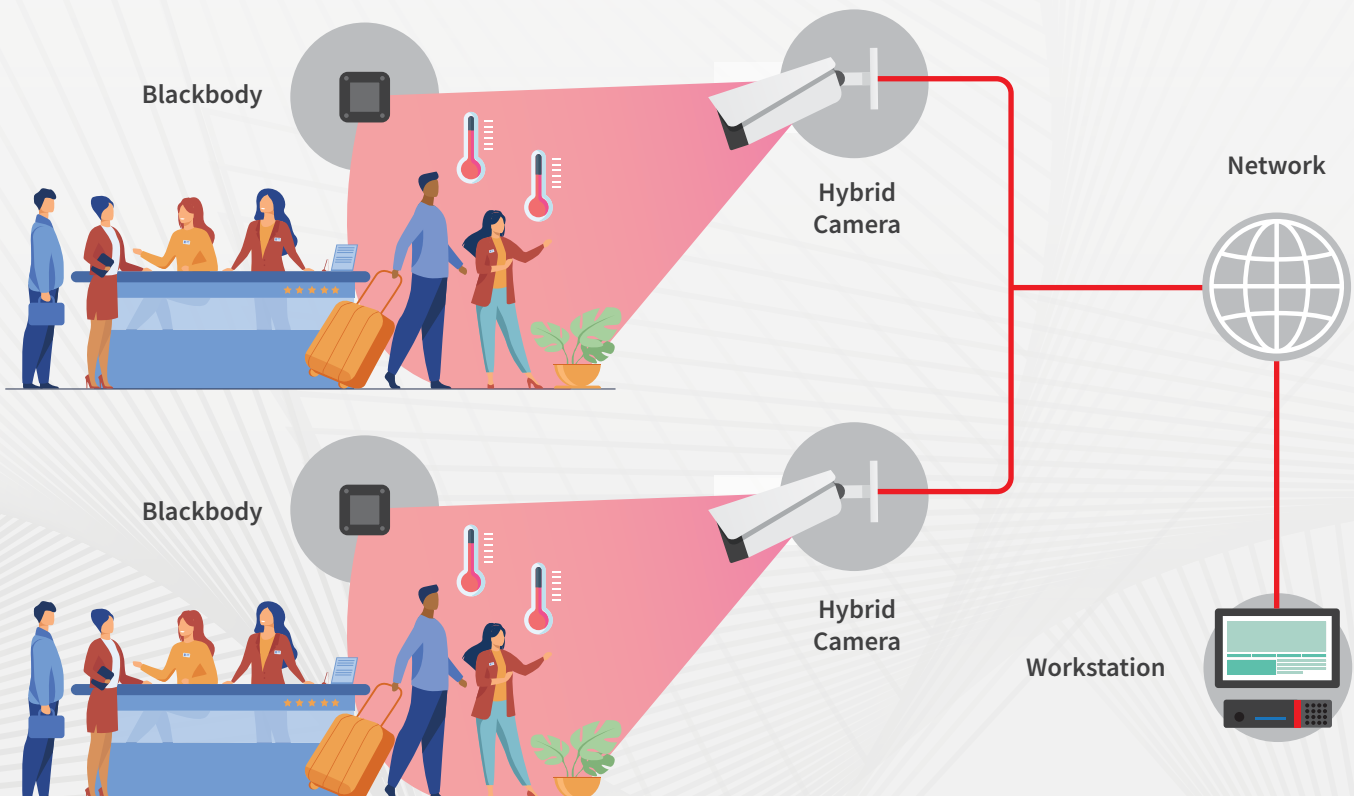
Real-time visualization of measured temperatures through the web interface of the camera. The operator acts accordingly enabling two-way communication with microphone and speakers on board the camera to separate those at risk from the crowd. Above a given threshold, the flashy white LED and/or an audio message from the speakers can be triggered.



## MULTI-POINT MEASURING SYSTEM

The workstation centralizes the different measuring points by DSS Express. Benefits over Basic System:

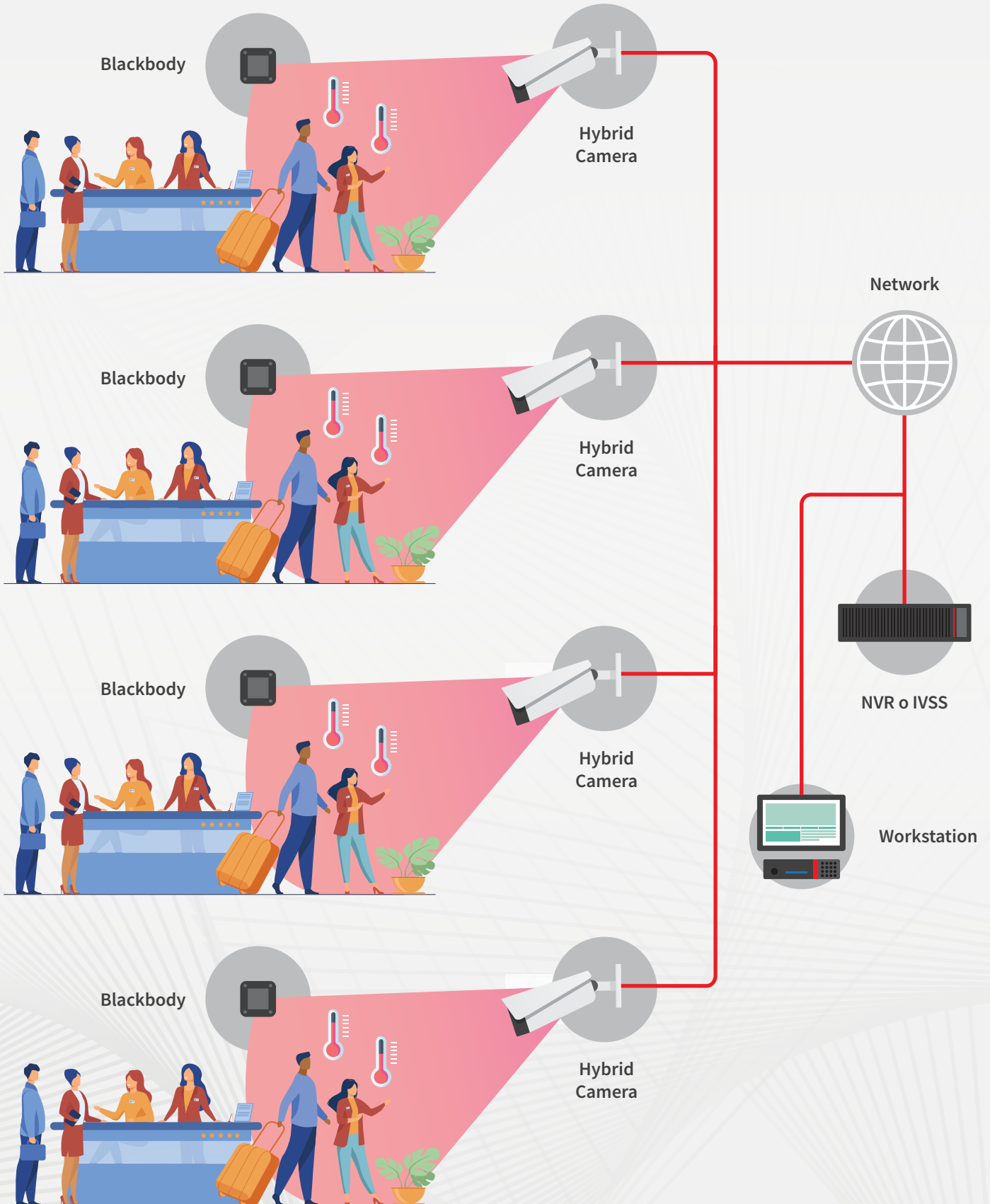
- Centralization of different measuring points in local network or remotely
- Graphic mapping
- Reception of event notifications, alarm buzzer and pop-up window in the concerned channel
- Possibility of linking the event of a channel to another one (i.e.: an abnormal detection in a channel can be linked to the switch of the alarm output of another device)



# MULTI-POINT MEASURING SYSTEM WITH STORAGE AND METADATA

The workstation centralizes the different measuring points by DSS Express. Benefits over previous System:

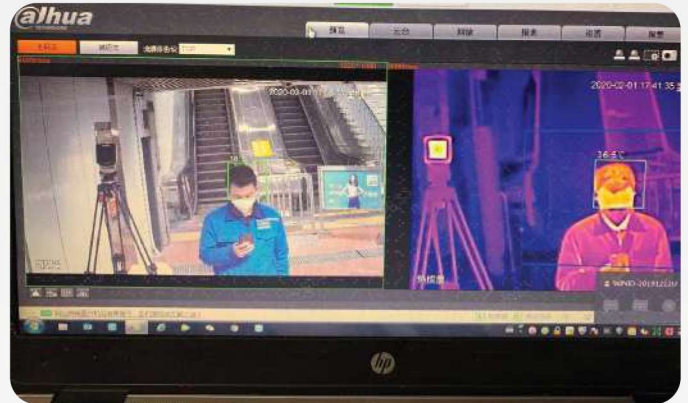
- Detection of covered faces (up to 4 channels with NVR5X-I, 8 channels with IVSS7X)
- Storage of images



## SUCCESS CASES

### BEIJING METRO LINE 2

At the security check gate of all subway lines in Beijing, the subway company adopts the human body temperature measurement solution provided by Dahua to conduct remote non-contact real-time temperature measurement and greatly improve the detection efficiency of subway security personnel through automatic sound-light alarm.



### SHANGHAI RAILWAY STATION

Dahua thermal human temperature measurement solution helps Shanghai railway station, one of the busiest railway station in the world, to realize rapid human body temperature measurement with dense crowds and find people with abnormal body temperature timely.

